

1903

Bas Melimburgs Bloed.

Handwritten musical notation on a single staff, starting with a treble clef and a 6/8 time signature. The notation includes various note values and rests.

(S)

Handwritten musical notation on a single staff, continuing the piece with similar note values and rests.

Handwritten musical notation on a single staff, featuring a series of notes and rests.

Handwritten musical notation on a single staff, including a dynamic marking (>) and a fermata over a note.

Handwritten musical notation on a single staff, showing a melodic line with various note values.

Handwritten musical notation on a single staff, ending with a circled 'S' and a double bar line.

Handwritten musical notation on a single staff, starting with a treble clef and a key signature of one sharp.

Handwritten musical notation on a single staff, continuing the piece with a dynamic marking (>).

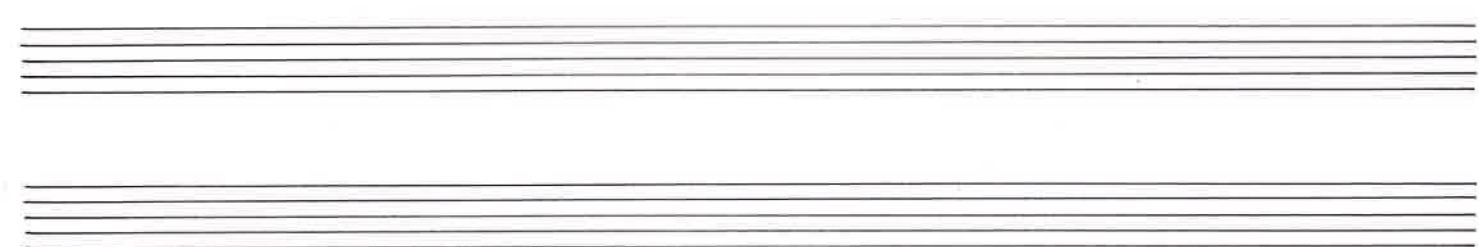
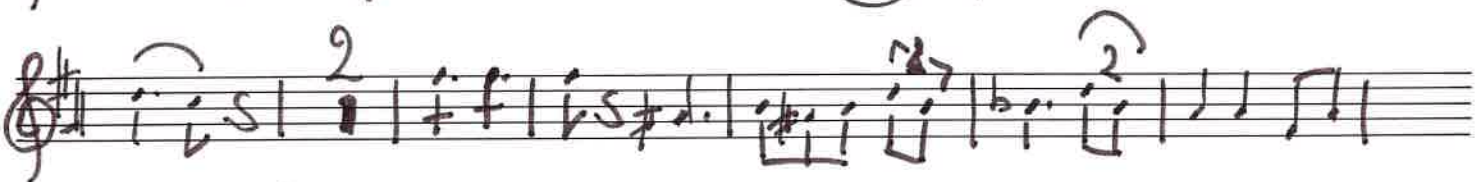
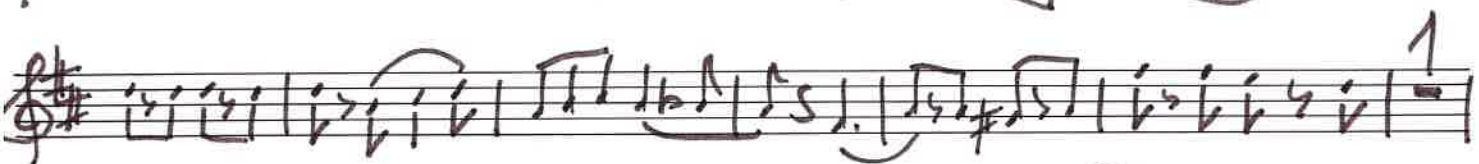
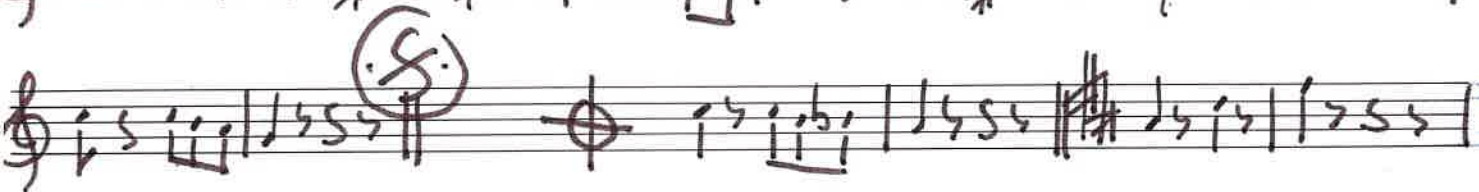
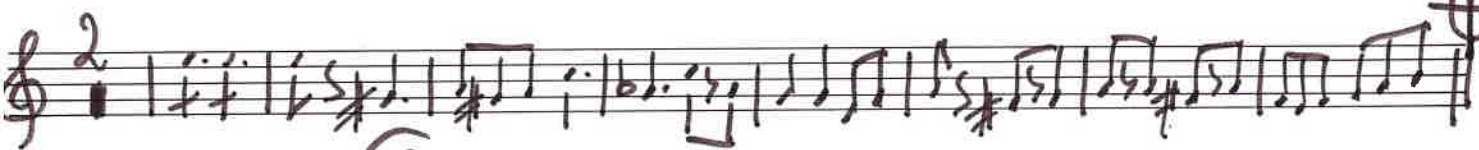
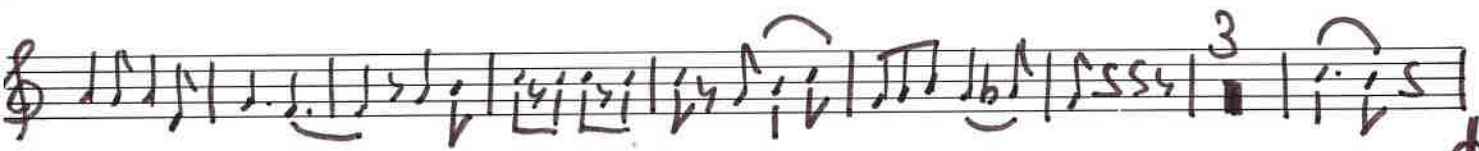
Handwritten musical notation on a single staff, showing a melodic line with various note values.

Handwritten musical notation on a single staff, including a fermata over a note.

Handwritten musical notation on a single staff, showing a melodic line with various note values.

Two empty musical staves at the bottom of the page.

Trompet 1. Mielimburgs Bloed.



trompet
2-3

Mie limburgs Bloed.

Handwritten musical score for trumpet, titled "Mie limburgs Bloed." The score consists of 11 staves of music in G major, 2/4 time. It includes various musical notations such as notes, rests, accidentals, and dynamic markings. There are several circled "S." markings and numerical annotations (2, 3, 4, 5) above the staves. The piece concludes with a double bar line and repeat dots.

saxtenor^s

mie limburgs Bloed.

Handwritten musical score for saxophone in G major, 2/4 time, titled "mie limburgs Bloed." The score consists of ten staves of music. The first staff begins with a treble clef, a key signature of one sharp (F#), and a 2/4 time signature. The music is written in a single melodic line. The second staff contains a circled "S." and features several triplet markings (indicated by the number "3" above groups of notes). The score continues with various rhythmic patterns, including eighth and sixteenth notes, and rests. The final staff ends with a double bar line and repeat dots. There are also some circled "S." markings throughout the piece, possibly indicating specific sections or ornaments.

